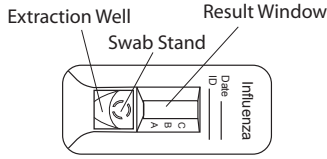


# Status Flu A & B

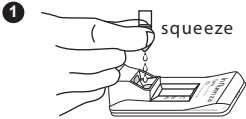
## Nasal Swab/Nasopharyngeal Swab

P-52719-B

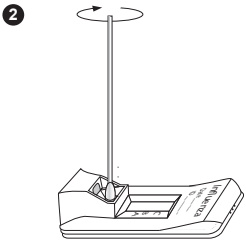
### TEST DEVICE



### PROCEDURE

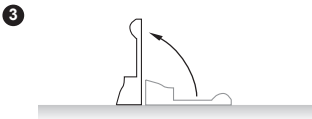


Tear the tab off the Extraction Reagent Capsule and dispense entire contents into the Extraction Well.



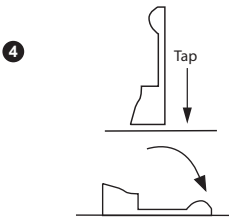
Insert the specimen swab in the Swab Stand.

- **Spin** swab 3 times to mix the specimen.
- **Let stand** 1 minute.
- **Spin** swab 3 times again.



Discard the swab.

Raise the device upright and **let stand** 1–2 seconds.



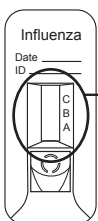
Gently **tap** device to ensure the liquid flows into the hole.

Then, lay the device back down.

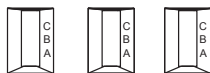
**Set a timer for 15 minutes.**

- 5** Read test results at 10–15 minutes.  
Confirm negative results at 15 minutes.  
Do not read after 15 minutes.

### INTERPRETATION OF RESULTS



**A reddish purple A and/or B Line(s) with C Line is positive.**

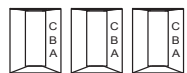


A line: Influenza type A  
B line: Influenza type B  
A & B lines: Influenza type A & B\*

**C Line only Negative (-)**



**No C Line Invalid**



**Repeat with new sample and device.**

\*Repeatable influenza A and B “dual positive” results should be confirmed by cell culture or PCR testing before reporting results.